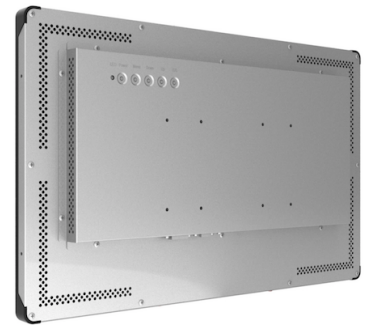


Insight *Touch*



IST1511W

15.6-inch LCD

Open-Frame *Touch Monitor*

**10-PCAP
Touch**

**Commercial
Grade**

**VESA
Mounting**

Feature:

- 15.6-inch LCD, 16:9, 1920X1080 DPI
- 10-Point PCAP Touch
- Landscape or Portrait display
- HDMI&VGA&DVI Port
- Support OS: Windows, Linux, Android

Application:

- ATM
- Ticket Terminal
- Smart Vending Machine
- Transportation
- Game Machine

Insight *Touch*



Product Name		IST 1511W	
LCD panel	Size	15.6 inch	
	Aspect Ratio	16 : 9	
	Backlight Type	LED Backlight	
	Display Frame Rate	60Hz	
	Active Area	344.2mm x 193.5mm	
	Display Resolution	1920 × 1080 @ 60 Hz	
	Response Time	35 ms	
	Color	16.7 million	
	Brightness	220 cd/m ²	
	Contrast Ratio	650:1	
	Viewing Angle (CR > 10)	Horizontal: 170° (85°/85°) Vertical: 170° (85°/85°)	
	Video Input Format	RGB Analog Signal/ Digital Signal	
	Video Input Interface	HDMI / VGA / DVI	
	Warranty	1 Year	
Touch Panel	Touch Screen Type	PCAP	
	Gover Glass	3mm	
	Transparency	87%	
	Hardness	7H	
	Interface	USB2.0	
	Touch Point	10	
	Response Time	≤15 ms	
	Touch Method	Finger / Capacitive Stylus	
	Touch Lifespan	≥15,000,000	
	Single-point OS	Windows XP , Linux	
	Multi-point OS	Windows7/8 , Android	
	Warranty	1 Year	
	Touch Monitor	Dimension	401.5mm × 250.7mm × 39.5mm
		Package Dimension	TBD
Weight(Approximately)		3kg~4kg	
Wall Mount Type		VESA, MIS-D, 75, C	
Power Supply		Input : DC 12V±5%	
Normal Operation		≤ 15W (typ.)	
Power Off		≤ 2W (typ.)	
Connector		1XVGA, 1XDVI, 1XHDMI	
Temperature		Operating: 0°C-40°C ; Storage: -20°C-60°C 90% RH	
Humidity		Operating: 20%-80%; Storage: 10%-90%	
Agency Approval		CCC, FCC, CE, CB	
Warranty		3 Years	